

Scaled data based on original data using  
LM-79-08 Approved Method: Electrical and Photometric Measurements of Solid-  
State Lighting Products

Test Report Prepared for  
Cooper Lighting Solutions  
(formerly Eaton)

Brand: McGRAW-EDISON

Report Number: P#

Luminaire Tested: **ARCH4-110-AMB-U-T4W-HSS**

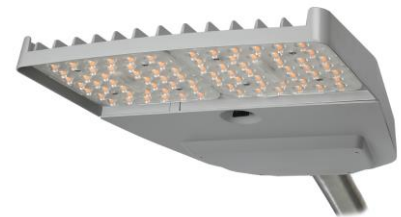
Issue Date: 12/16/2024

**Test Information**

Test Method: LM-79-08  
Report Number: P#  
TEST IS SCALED FROM IESNA LM-79-08 TEST DATA (G2-2406-129-11)  
Test Lab: INNOVATION CENTER  
Issue Date: 12/16/2024  
Manufacturer: COOPER LIGHTING SOLUTIONS (FORMERLY EATON)  
Product Line: MCGRAW-EDISON  
Catalog Number: ARCH4-110-AMB-U-T4W-HSS  
Description: ARCHEON CONTEMPORARY ROADWAY AND AREA LUMINAIRE  
(2) NARROW BAND AMBER, 600mA LIGHTSQUARES WITH 10 LEDS EACH AND TYPE IV  
WIDE OPTICS WITH HOUSE SIDE SHIELD  
Light Source: -  
Ballast/Driver: -

**Summary**

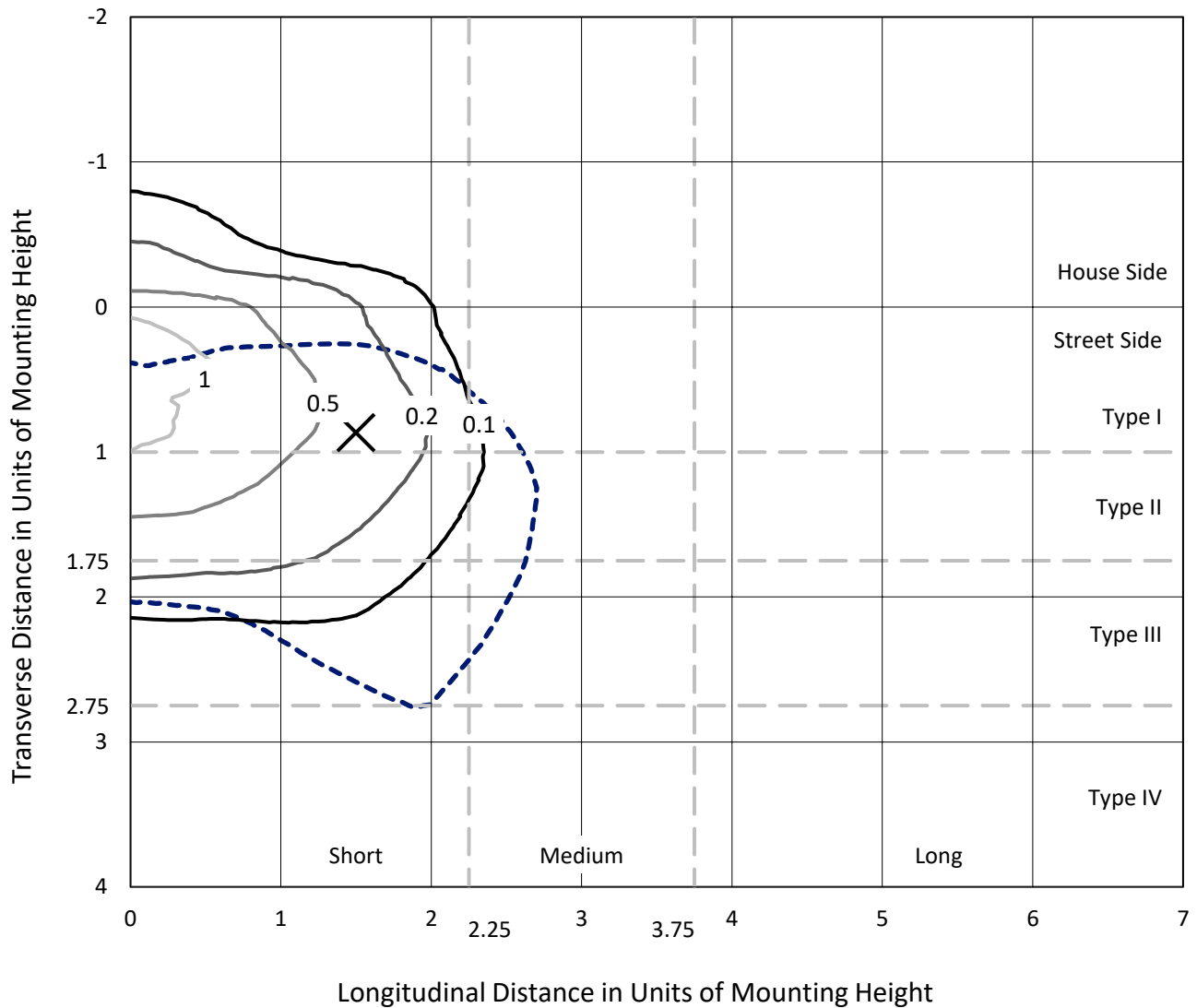
Lumens per Lamp: N/A  
Luminaire Lumens: 3234 lumens  
Efficiency: N/A  
Efficacy: 28.7 lumens/watt  
Luminous Opening: Rectangular (W 1.17' x L: 0.58' x H: 0')  
IES Classification: Type III - Short  
BUG Rating: B1 - U0 - G1  
  
Input Watts (W): 112.6  
Input Voltage (V): NR  
Input Current (Ain): NR  
Voltage Rise (V): NR  
Power Factor: NR  
Total Harmonic Distortion (THDi): NR  
Frequency (hertz): 60  
Stabilization Time: NR  
Operation Time: NR  
Ambient Temperature (°C): NR  
Test Distance: 24 FT



REPORT NUMBER: P#  
 CATALOG NUMBER: ARCH4-110-AMB-U-T4W-HSS

### Iso-Footcandle Lines of Horizontal Illumination

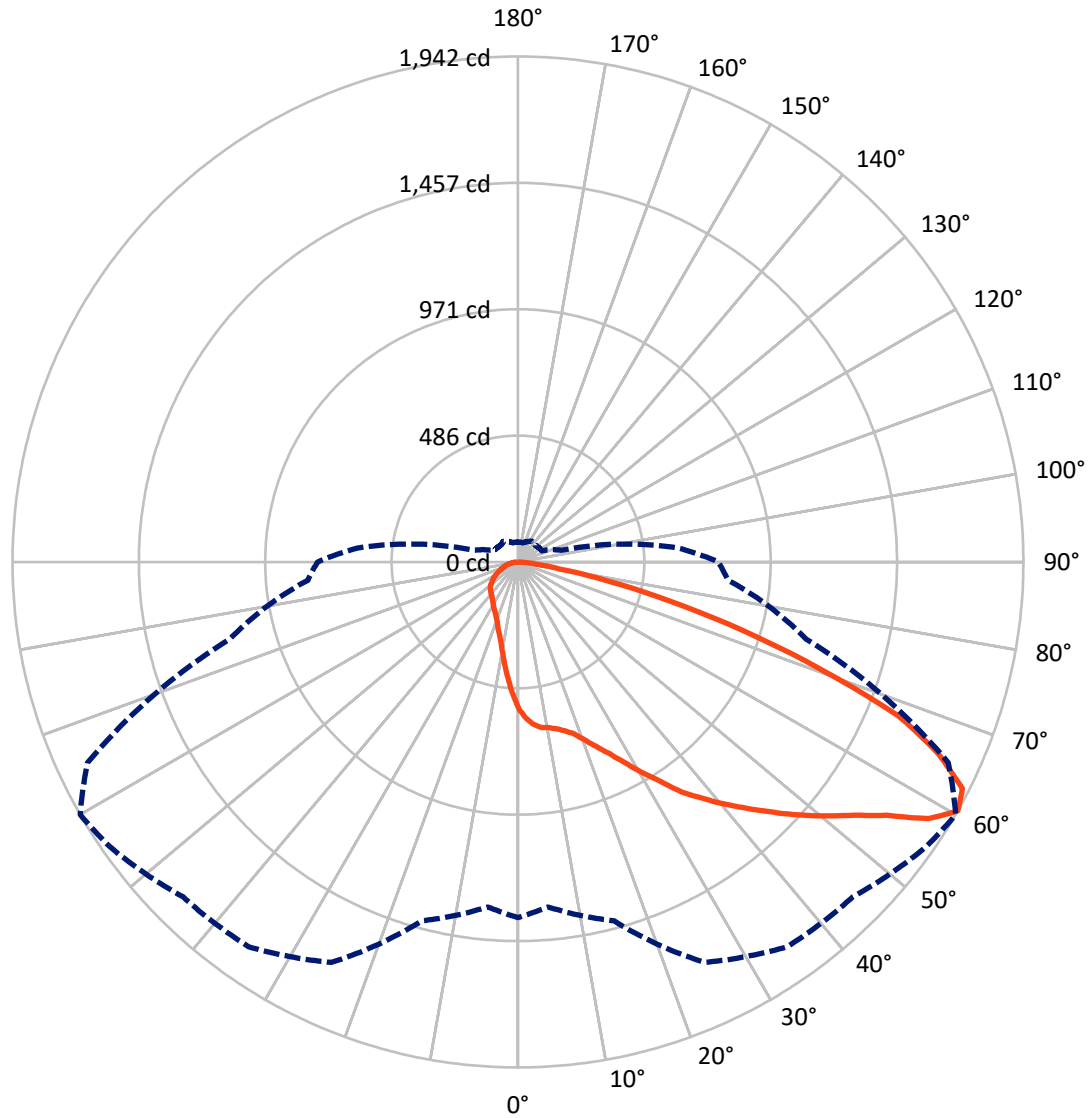
✕ Max cd  
 - - - 1/2 Max cd



Based on 25 foot mounting height. Maximum calculated value = 1.3 fc  
 Type III - Short - N/A

REPORT NUMBER: P#  
CATALOG NUMBER: ARCH4-110-AMB-U-T4W-HSS

### Luminous Intensity Polar Plot



— Vertical Plane Through 60-Deg Lateral    - - - Horizontal Cone Through 60-Deg Vertical

REPORT NUMBER: P#  
 CATALOG NUMBER: ARCH4-110-AMB-U-T4W-HSS

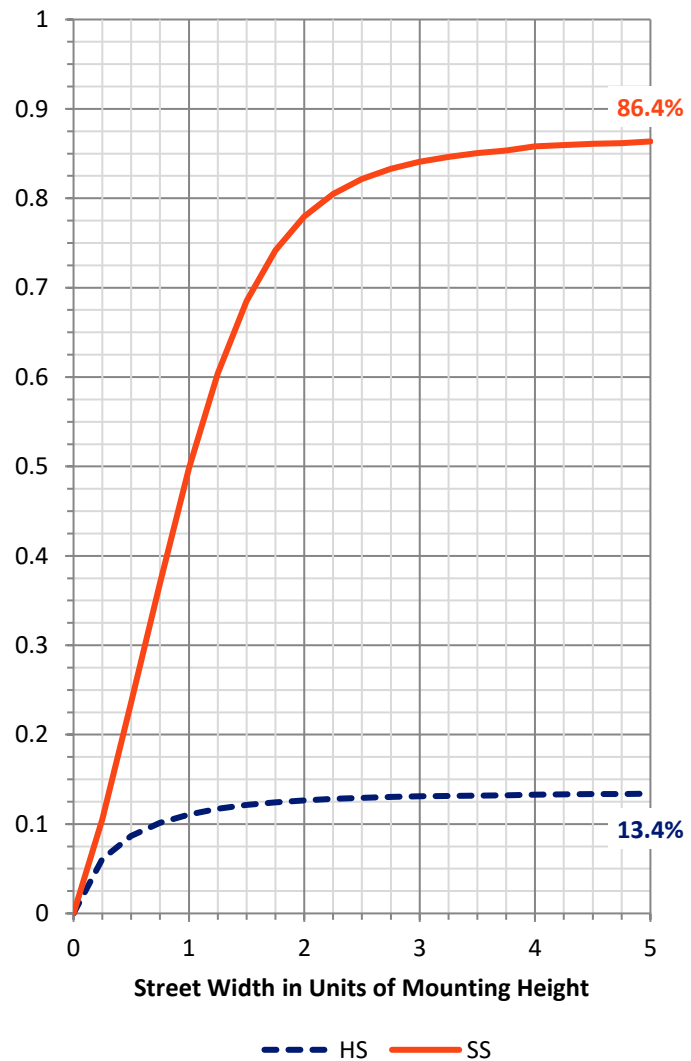
**FLUX DISTRIBUTION:**

		Downward	Upward	Total
<b>House Side</b>	Lumens	438.5	0.0	438.5
	% Fixture	13.6	0.0	13.6
<b>Street Side</b>	Lumens	2795.5	0.0	2795.5
	% Fixture	86.4	0.0	86.4
<b>Total</b>	Lumens	3234.0	0.0	3234.0
	% Fixture	100.0	0.0	100.0

**ZONAL LUMENS:**

Zone	Lumens	% Fixture
0°-10°	49.6	1.5
10°-20°	144.7	4.5
20°-30°	256.5	7.9
30°-40°	397.7	12.3
40°-50°	599.9	18.6
50°-60°	771.4	23.9
60°-70°	691.5	21.4
70°-80°	291.8	9.0
80°-90°	30.8	1.0
90°-100°	0.0	0.0
100°-110°	0.0	0.0
110°-120°	0.0	0.0
120°-130°	0.0	0.0
130°-140°	0.0	0.0
140°-150°	0.0	0.0
150°-160°	0.0	0.0
160°-170°	0.0	0.0
170°-180°	0.0	0.0
0°-90°	3234.0	100.0
0°-180°	3234.0	100.0

**Coefficient of Utilization**



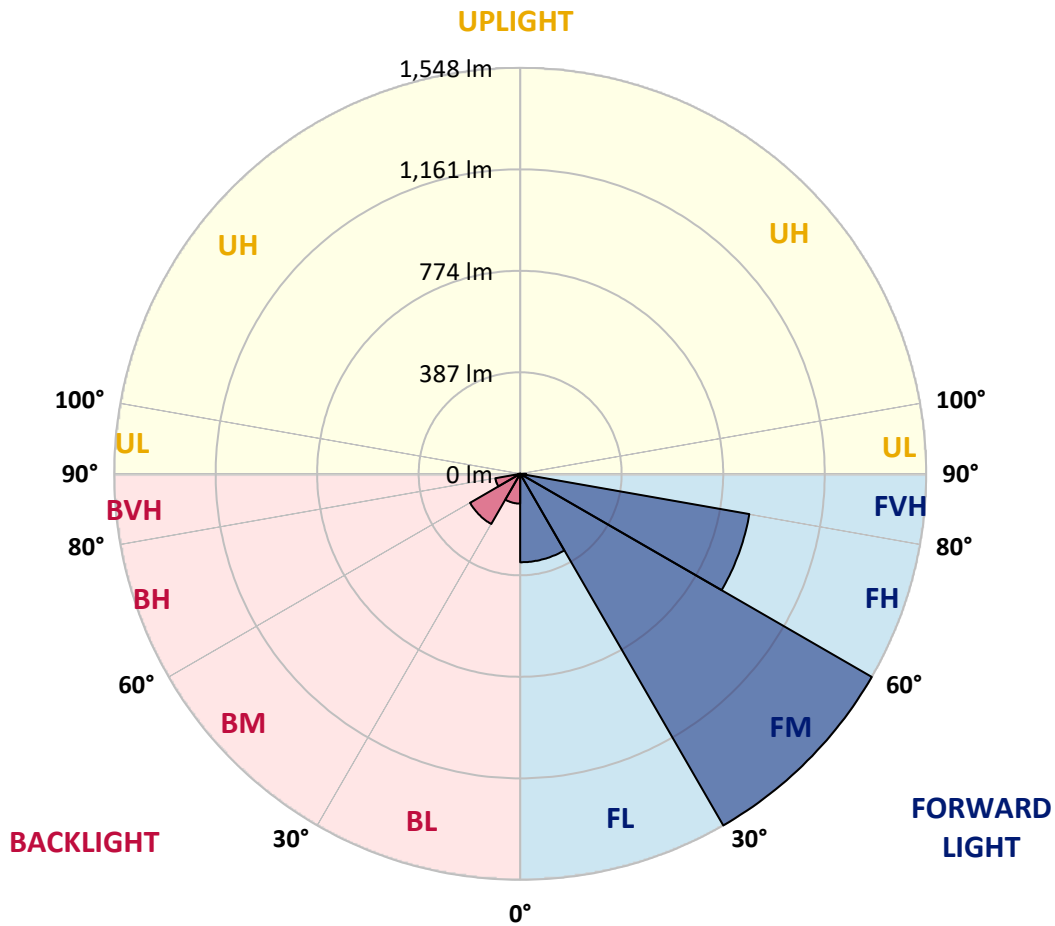
REPORT NUMBER: P#  
 CATALOG NUMBER: ARCH4-110-AMB-U-T4W-HSS

**LUMINAIRE CLASSIFICATION SYSTEM LUMEN TABLE AND BUG RATING:**

Zone	Lumens	% Fixture	Zone Rating/Lumen Limit		
			B	U	G
FL (0°-30°)	337.3	10.4			
FM (30°-60°)	1548.1	47.9			
FH (60°-80°)	887.3	27.4			G1/1800
FVH (80°-90°)	22.8	0.7			G1/100
BL (0°-30°)	113.6	3.5	B1/500		
BM (30°-60°)	220.9	6.8	B1/1000		
BH (60°-80°)	96.0	3.0	B0/110		G0/110
BVH (80°-90°)	8.0	0.2			G0/10
UL (90°-100°)	0.0	0.0		U0/0	
UH (100°-180°)	0.0	0.0		U0/0	

**BUG Rating: B1-U0-G1**

Type III Short



REPORT NUMBER: P#  
 CATALOG NUMBER: ARCH4-110-AMB-U-T4W-HSS

**CANDELA DISTRIBUTION (FULL):**

	0°	5°	15°	25°	35°	45°	55°	60°	65°	75°	85°
0°	565.8	565.8	565.8	565.8	565.8	565.8	565.8	565.8	565.8	565.8	565.8
2.5°	632.0	632.0	626.9	626.9	621.8	611.6	606.5	601.4	596.3	586.2	570.9
5°	662.6	657.5	657.5	652.4	652.4	642.2	632.0	626.9	616.7	601.4	576.0
7.5°	683.0	677.9	672.8	672.8	667.7	652.4	647.3	642.2	632.0	611.6	581.1
10°	718.7	718.7	708.5	698.3	688.1	667.7	652.4	647.3	637.1	616.7	576.0
12.5°	779.8	779.8	764.5	744.2	723.8	688.1	667.7	657.5	642.2	621.8	581.1
15°	851.2	851.2	830.8	810.4	779.8	728.9	688.1	672.8	657.5	632.0	586.2
17.5°	917.5	917.5	902.2	871.6	835.9	779.8	723.8	693.2	672.8	642.2	596.3
20°	963.3	963.3	948.0	927.7	892.0	830.8	764.5	728.9	693.2	652.4	606.5
22.5°	978.6	978.6	973.5	963.3	942.9	886.9	810.4	769.6	723.8	667.7	616.7
25°	988.8	993.9	988.8	983.7	978.6	937.8	861.4	815.5	759.5	688.1	632.0
27.5°	1014.3	1014.3	1004.1	1004.1	1009.2	988.8	922.6	871.6	805.3	708.5	647.3
30°	1044.9	1039.8	1034.7	1029.6	1039.8	1034.7	988.8	937.8	861.4	734.0	662.6
32.5°	1090.8	1095.9	1080.6	1060.2	1075.5	1085.7	1060.2	1004.1	927.7	769.6	683.0
35°	1187.6	1192.7	1151.9	1116.2	1126.4	1136.6	1131.5	1085.7	993.9	805.3	688.1
37.5°	1366.0	1371.1	1309.9	1218.2	1197.8	1182.5	1197.8	1151.9	1050.0	825.7	698.3
40°	1518.9	1518.9	1473.0	1355.8	1284.4	1233.5	1259.0	1223.3	1126.4	861.4	713.6
42.5°	1636.1	1625.9	1590.3	1462.8	1396.6	1315.0	1320.1	1294.6	1202.9	897.1	723.8
45°	1753.4	1712.6	1651.4	1559.7	1503.6	1417.0	1391.5	1371.1	1284.4	937.8	744.2
47.5°	1794.1	1733.0	1697.3	1651.4	1590.3	1529.1	1467.9	1452.6	1371.1	988.8	754.4
50°	1789.0	1743.2	1743.2	1687.1	1651.4	1610.6	1549.5	1534.2	1452.6	1029.6	769.6
52.5°	1743.2	1743.2	1763.6	1712.6	1702.4	1676.9	1646.3	1615.7	1534.2	1075.5	790.0
55°	1727.9	1722.8	1778.8	1743.2	1763.6	1743.2	1763.6	1717.7	1636.1	1116.2	810.4
57.5°	1600.5	1590.3	1676.9	1778.8	1814.5	1794.1	1865.5	1860.4	1748.3	1146.8	825.7
60°	1366.0	1330.3	1427.2	1697.3	1804.3	1819.6	1911.4	1942.0	1824.7	1146.8	810.4
62.5°	1136.6	1121.3	1192.7	1498.5	1722.8	1783.9	1870.6	1916.5	1850.2	1131.5	769.6
65°	815.5	861.4	983.7	1274.2	1595.4	1687.1	1733.0	1773.7	1778.8	1085.7	718.7
67.5°	555.6	591.2	698.3	1085.7	1462.8	1554.6	1554.6	1575.0	1559.7	932.7	591.2
70°	377.2	402.7	463.8	897.1	1284.4	1320.1	1299.7	1233.5	1172.3	749.3	448.5
72.5°	265.0	280.3	310.9	683.0	1080.6	1050.0	978.6	907.3	830.8	581.1	326.2
75°	183.5	193.7	214.1	463.8	835.9	723.8	601.4	606.5	581.1	453.6	244.7
77.5°	101.9	122.3	132.5	275.2	519.9	474.0	356.8	356.8	382.3	316.0	178.4
80°	30.6	35.7	51.0	132.5	203.9	270.1	203.9	163.1	152.9	183.5	122.3
82.5°	15.3	15.3	25.5	66.3	76.5	101.9	96.8	76.5	56.1	91.7	71.4
85°	5.1	10.2	10.2	20.4	20.4	25.5	35.7	25.5	15.3	35.7	35.7
87.5°	0.0	0.0	5.1	5.1	5.1	5.1	5.1	5.1	5.1	5.1	5.1
90°	0.0	0.0	0.0	0.0	0.0	0.0	0.0	0.0	0.0	0.0	0.0

REPORT NUMBER: P#  
 CATALOG NUMBER: ARCH4-110-AMB-U-T4W-HSS

**CANDELA DISTRIBUTION (continued):**

	90°	95°	105°	115°	125°	135°	145°	155°	165°	175°	180°
0°	565.8	565.8	565.8	565.8	565.8	565.8	565.8	565.8	565.8	565.8	565.8
2.5°	565.8	555.6	540.3	519.9	504.6	489.3	474.0	474.0	458.7	453.6	453.6
5°	565.8	550.5	509.7	474.0	438.3	407.8	382.3	372.1	356.8	351.7	346.6
7.5°	560.7	535.2	484.2	428.1	377.2	341.5	316.0	300.7	290.5	285.4	280.3
10°	555.6	525.0	453.6	382.3	326.2	290.5	270.1	254.8	244.7	239.6	239.6
12.5°	550.5	514.8	423.0	341.5	285.4	254.8	234.5	229.4	219.2	214.1	214.1
15°	555.6	509.7	397.6	310.9	259.9	229.4	214.1	209.0	203.9	198.8	198.8
17.5°	555.6	504.6	377.2	285.4	239.6	214.1	198.8	193.7	188.6	188.6	188.6
20°	565.8	504.6	356.8	259.9	219.2	198.8	188.6	183.5	183.5	178.4	178.4
22.5°	570.9	504.6	341.5	244.7	203.9	183.5	178.4	173.3	173.3	173.3	173.3
25°	586.2	509.7	326.2	229.4	193.7	178.4	168.2	168.2	163.1	163.1	163.1
27.5°	596.3	509.7	310.9	219.2	183.5	168.2	163.1	158.0	158.0	152.9	152.9
30°	611.6	519.9	300.7	203.9	178.4	163.1	158.0	152.9	147.8	147.8	147.8
32.5°	626.9	525.0	290.5	193.7	168.2	158.0	147.8	142.7	142.7	142.7	142.7
35°	637.1	525.0	275.2	188.6	158.0	152.9	142.7	137.6	137.6	137.6	137.6
37.5°	647.3	535.2	270.1	178.4	152.9	142.7	137.6	132.5	132.5	127.4	132.5
40°	662.6	550.5	265.0	173.3	147.8	137.6	132.5	127.4	127.4	127.4	127.4
42.5°	677.9	560.7	265.0	168.2	142.7	132.5	127.4	122.3	122.3	122.3	122.3
45°	693.2	570.9	259.9	163.1	137.6	127.4	122.3	117.2	117.2	117.2	117.2
47.5°	708.5	581.1	254.8	158.0	132.5	122.3	117.2	112.1	112.1	112.1	112.1
50°	723.8	591.2	239.6	147.8	127.4	117.2	112.1	112.1	107.0	107.0	107.0
52.5°	739.1	606.5	229.4	137.6	117.2	112.1	107.0	107.0	101.9	101.9	101.9
55°	764.5	616.7	209.0	127.4	112.1	107.0	101.9	101.9	96.8	96.8	96.8
57.5°	774.7	621.8	193.7	117.2	101.9	101.9	101.9	96.8	86.6	81.6	81.6
60°	769.6	616.7	173.3	101.9	96.8	91.7	96.8	86.6	76.5	76.5	76.5
62.5°	739.1	601.4	152.9	91.7	86.6	86.6	86.6	81.6	71.4	66.3	66.3
65°	677.9	530.1	132.5	76.5	76.5	81.6	81.6	76.5	66.3	61.2	61.2
67.5°	540.3	382.3	112.1	66.3	71.4	76.5	76.5	66.3	61.2	56.1	56.1
70°	407.8	275.2	91.7	56.1	61.2	66.3	66.3	61.2	51.0	51.0	51.0
72.5°	295.6	193.7	76.5	51.0	56.1	56.1	56.1	51.0	45.9	40.8	40.8
75°	209.0	142.7	61.2	45.9	51.0	45.9	45.9	40.8	40.8	35.7	35.7
77.5°	142.7	91.7	51.0	35.7	40.8	35.7	35.7	35.7	30.6	30.6	30.6
80°	86.6	51.0	30.6	25.5	30.6	30.6	30.6	25.5	25.5	25.5	25.5
82.5°	56.1	30.6	20.4	20.4	20.4	20.4	20.4	20.4	20.4	20.4	20.4
85°	25.5	15.3	10.2	15.3	15.3	15.3	15.3	15.3	15.3	15.3	15.3
87.5°	5.1	5.1	5.1	5.1	10.2	10.2	5.1	5.1	5.1	0.0	0.0
90°	0.0	0.0	0.0	0.0	0.0	0.0	0.0	0.0	0.0	0.0	0.0

(END OF REPORT)